



The Drive, West Finchley, N3 1AE  
Guide Price £550,000 Leasehold - Share of Freehold

Council Tax Band E

**REAL ESTATES**  
Est. 1981

Estate Agents · Residential Sales · Investments · Lettings



Real Estates are delighted to bring to the market this 2 DOUBLE BEDROOM apartment set on the GROUND FLOOR in the iconic GRADE II LISTED Cedar Court, accessed via a GATED DRIVEWAY with residents parking and surrounded by stunning COMMUNAL GARDENS.

This SHARE OF FREEHOLD property offers an abundance of character throughout, including sash windows and fireplaces. There is a large separate kitchen with space to eat, two excellent sized bedrooms and a modern bathroom, whilst the lounge features a desirable bay window looking out onto the grounds.

Cedar Court is a unique building situated in a quiet, secluded location just a stone's throw away from West Finchley Northern Line Underground Station plus the shops, cafes and restaurants of Ballards Lane are within easy reach.

Service Charge: £330 PCM. Lease: 949 Years. No Ground Rent.

SOLE AGENT



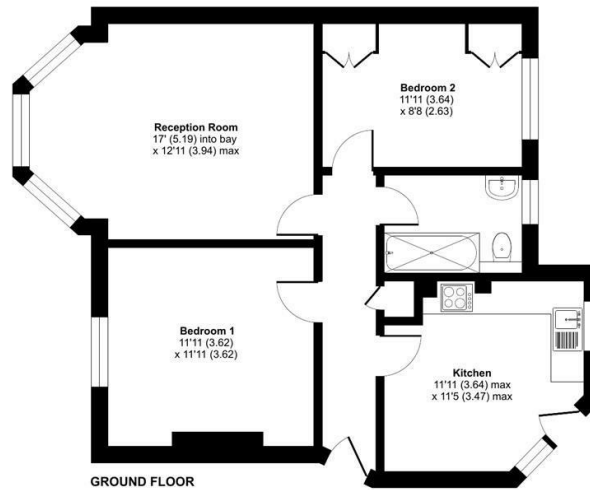






## The Drive, London, N3

Approximate Area = 714 sq ft / 66.3 sq m  
For identification only - Not to scale



Floor plan produced in accordance with RICS Property Measurement 2nd Edition, incorporating International Property Measurement Standards (IPMS2 Residential). © richcom 2025. Produced for Real Estates. REF: 1388314

Energy Efficiency Rating		
	Current	Potential
Very energy efficient - lower running costs		
A		
B		
C		
D		
E		
F		
G		
Not energy efficient - higher running costs		
EU Directive		



**Real Estates Woodside Park Office:**  
14/14a Sussex Ring  
Woodside Park N12 7HX

ll : 020 8445 6387  
e : [info@realestates-wsp.co.uk](mailto:info@realestates-wsp.co.uk)  
w : [www.realestates-wsp.co.uk](http://www.realestates-wsp.co.uk)